

# Bathurst Health Service: Executive and Senior Management Restructure Proposal



Overview

Update for HSU

13 February 2026

# Supports



- Employee Assistance Program (EAP) available to all staff: 1800 357 898
- For crisis assistance: Lifeline 13 11 14 or Mental Health Line 1800 011 511

# Timeline



Commence



Complete "Draft Restructure Plan"



Impacted Staff Notified



Finalise "Restructure Plan"



Planning and current state mapping

Brief to C/E for approval

Consultation commences



Brief to C/E approval

Grading

Affected Staff letters

Redeployment



Develop: "Plan for Appointment and Recruitment"



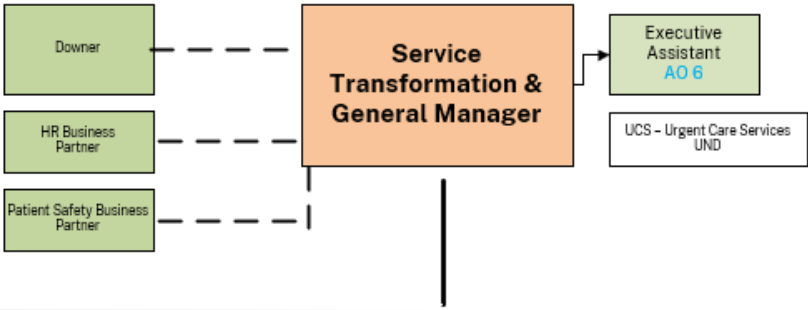
Implementation: "Plan for Appointment and Recruitment"

Close

NSW Health

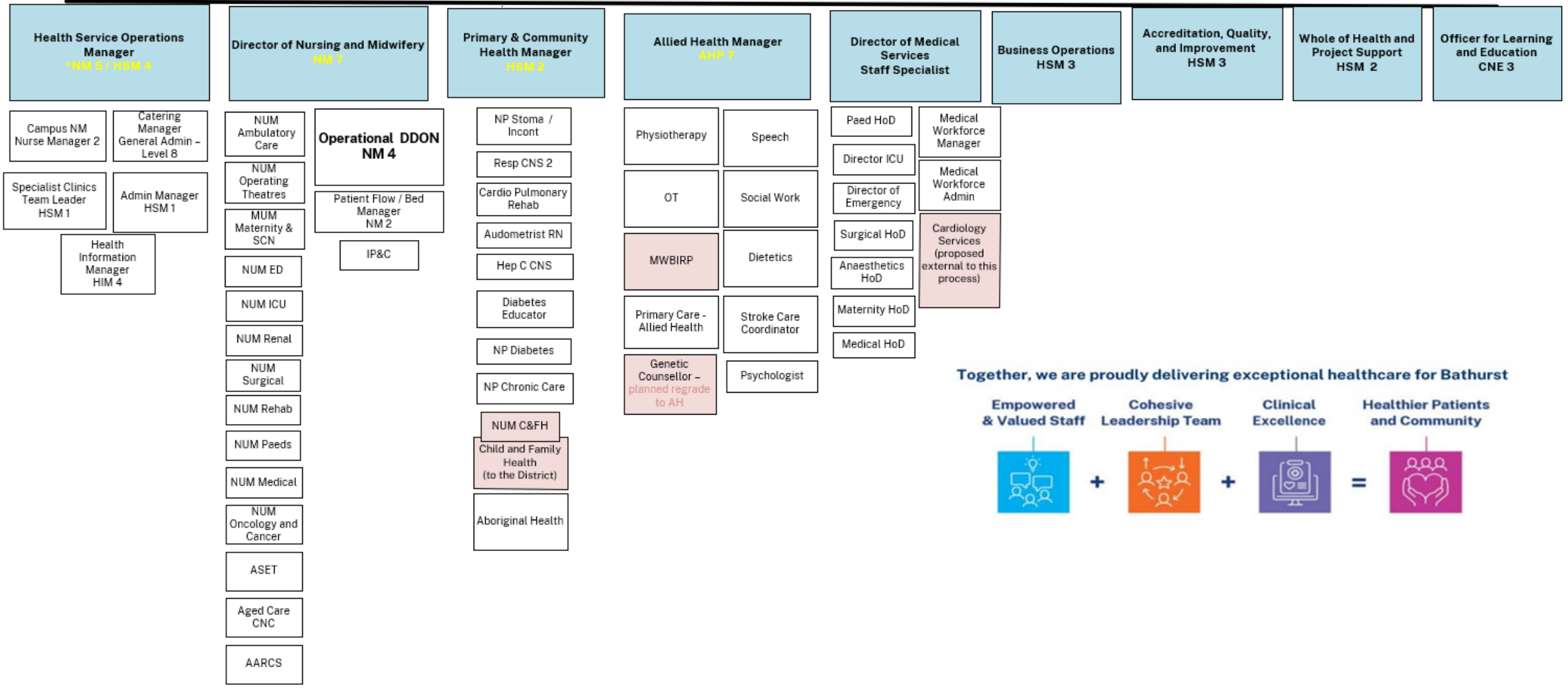
**WNSWLHD District wide Services**

- Workforce and Culture (HR Partners)
- Quality & Safety (Patient Safety Partners)
- Sterilising
- Palliative Care
- Pharmacy
- Medical Imaging
- Mental Health Drug and Alcohol
- Integrated Care / Planned Care for Better Health
- Aged Care (TACP and ACAT)
- Oral Health
- Pathology



**WNSWLHD Contract Manager**  
PPP Downer (Hard and Soft FM)

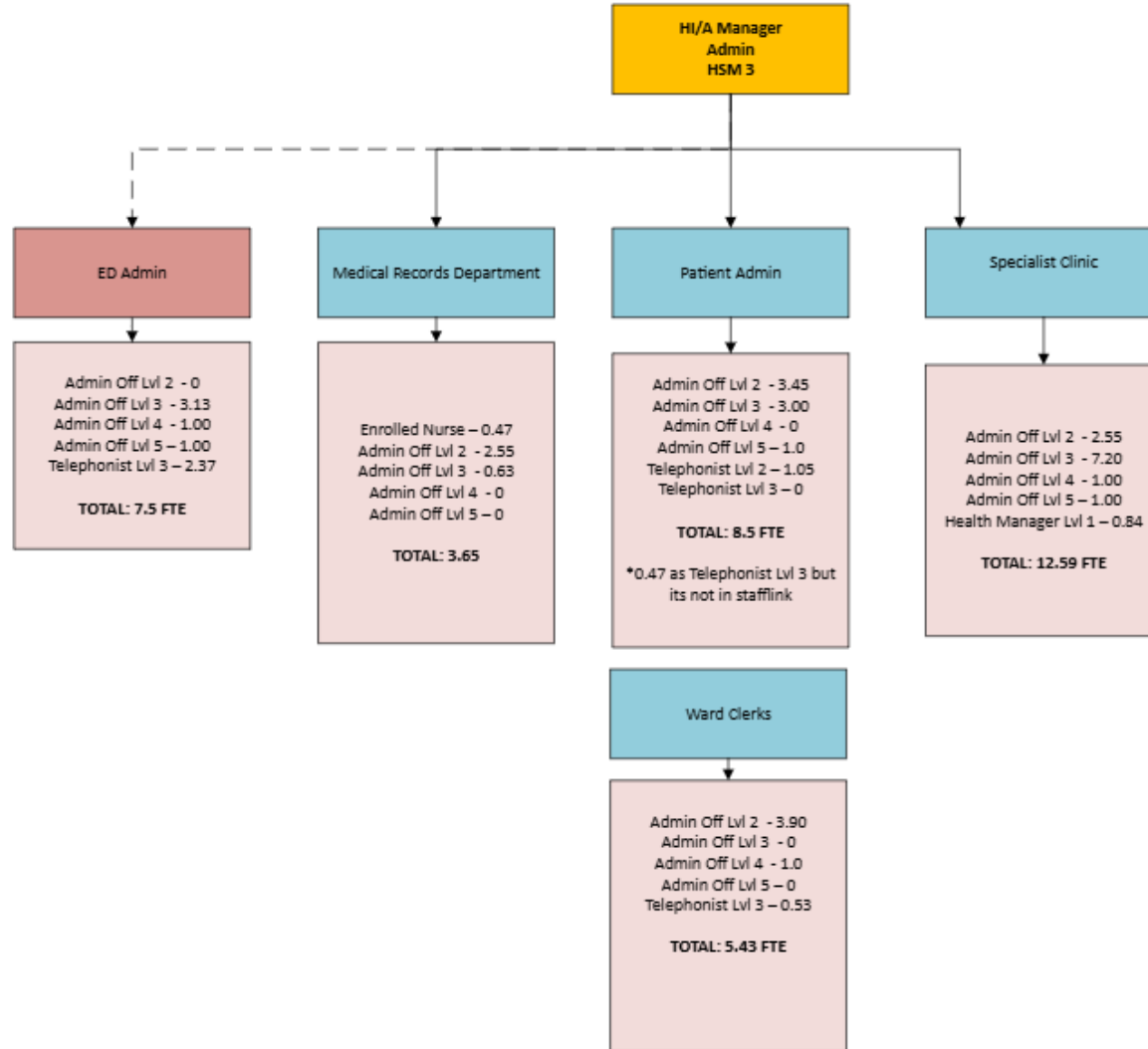
**Industry Partners**  
Primary Health Network  
Marathon Health  
Western Sydney University  
Charles Sturt University



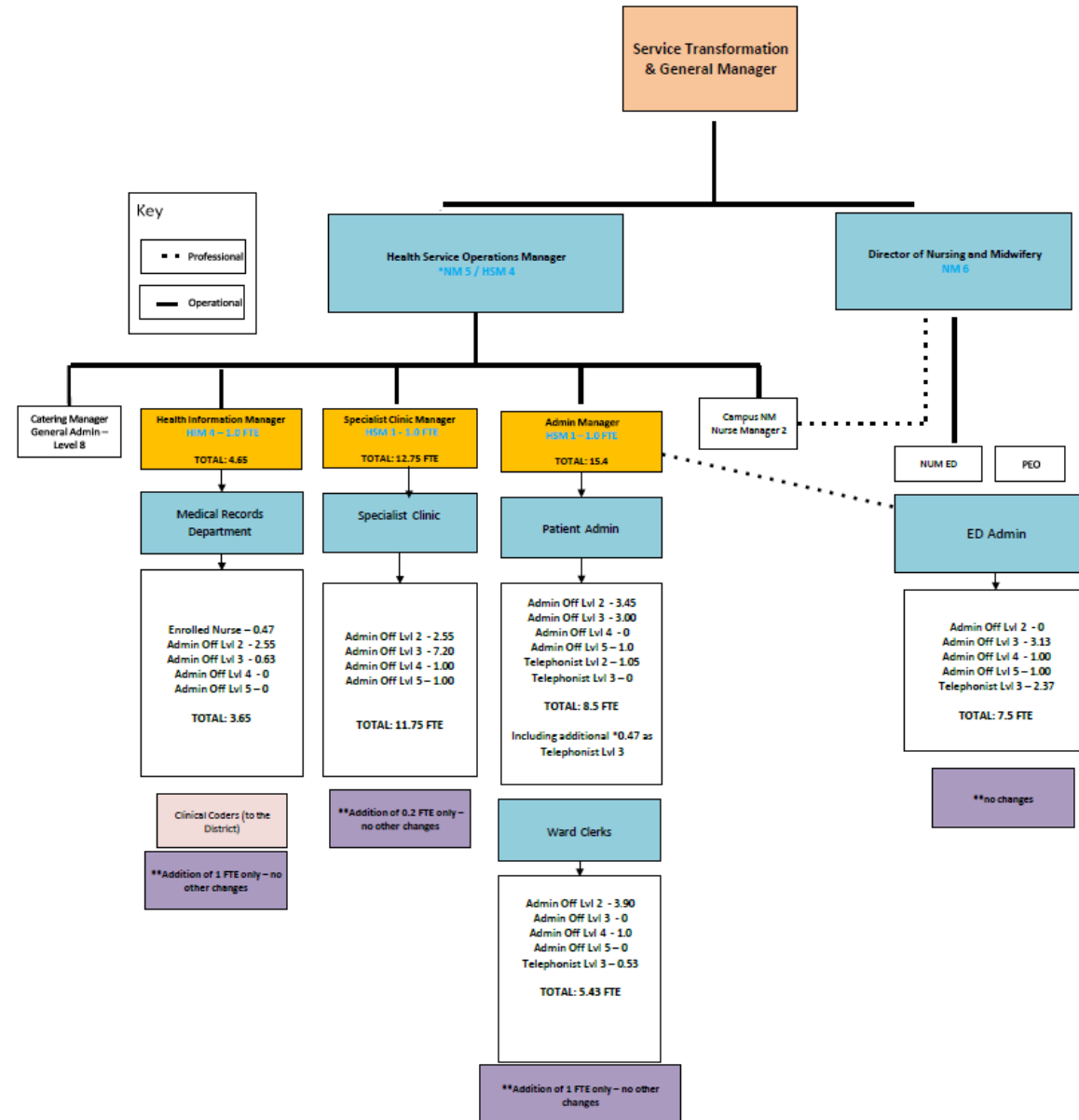
**Together, we are proudly delivering exceptional healthcare for Bathurst**



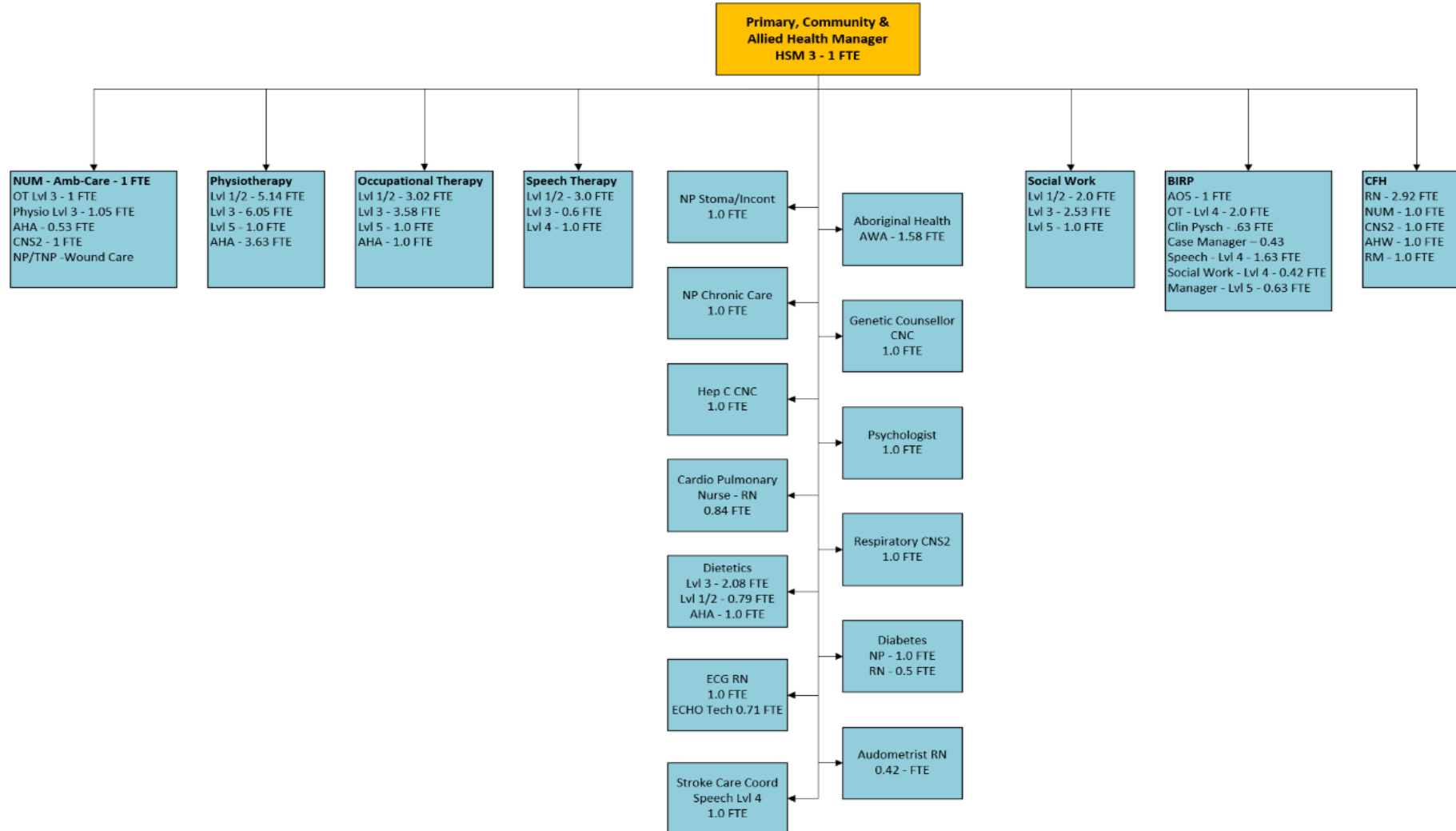
# Current – Health Information and Admin Department



# Proposed – Health Service Operations Department



# Current – Primary, Community, Allied Health Department



# Proposed – Allied Health and Community Health Departments

