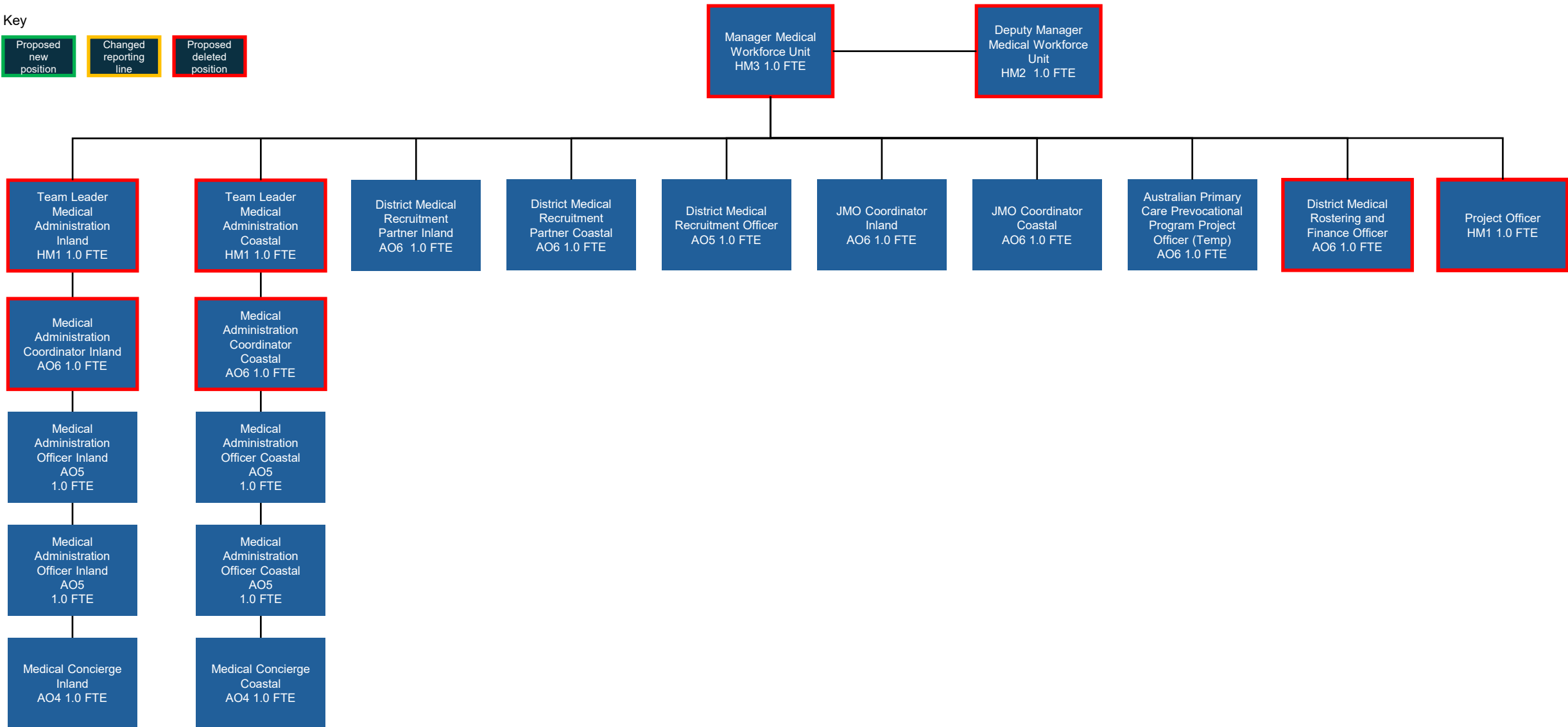
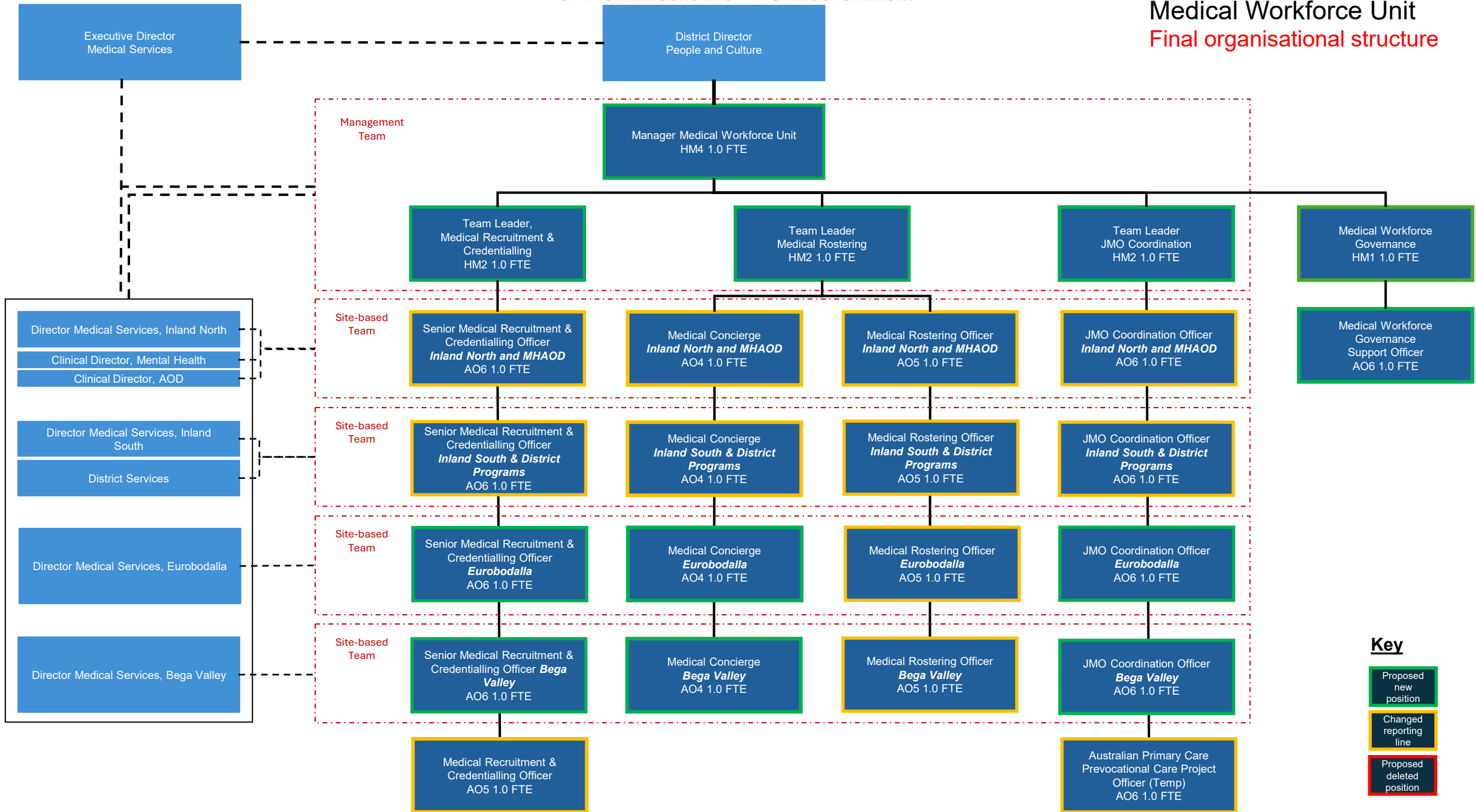


# Medical Workforce Unit Current

Key





**Key**

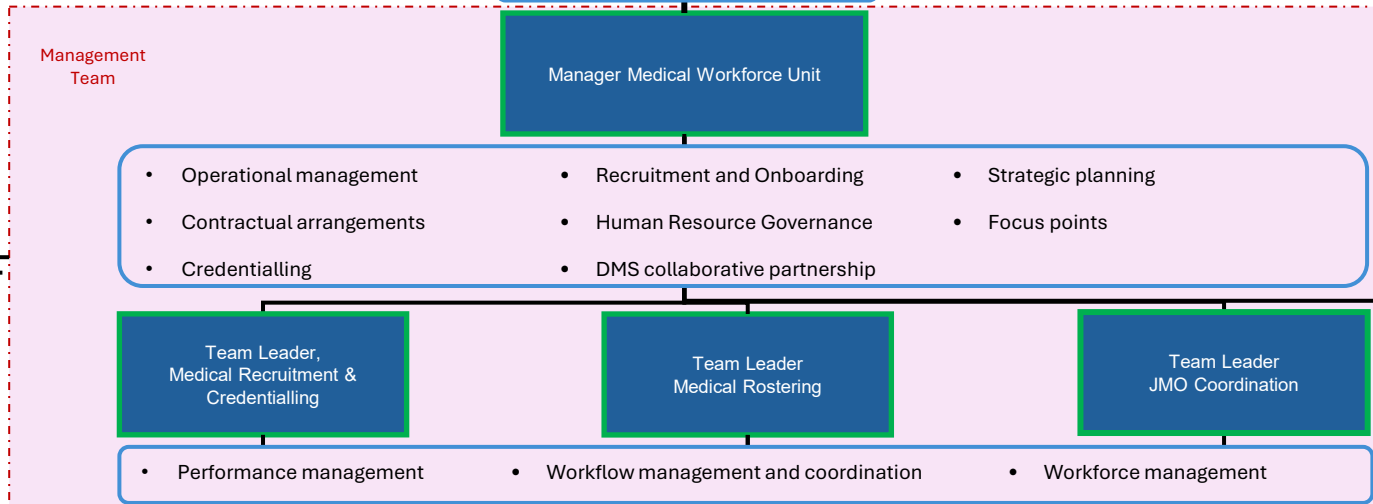
- Proposed new position
- Changed reporting line
- Proposed deleted position

Executive Director  
Medical Services

District Director  
People and Culture

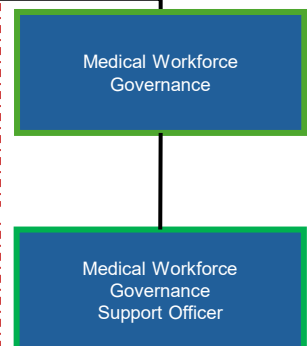
Executive and Managerial Oversight

- Medical accreditation
- Governance and Standards
- DMS management
- Financial and risk management
- Dedicate Work profile
- Partnership in Medical Recruitment
- Communication and enablement with various medical leaders (site and district)



- Director Medical Services, Inland North
- Clinical Director, Mental Health
- Clinical Director, AOD
- Director Medical Services, Inland South
- District Services
- Director Medical Services, Eurobodalla
- Director Medical Services, Bega Valley

- Primary communication through management team
- Professional management
- Identify need for locums
- Approve locum candidates
- Identify rostering vacancies and ensure effective rostering
- On-site JMO coordination
- Secondary communication and interactions
- Credentiailling



**Key**

- Accountabilities
- Proposed new position
- Changed reporting line
- Proposed deleted position