

CRITICAL CARE & MEDICAL IMAGING DIVISION

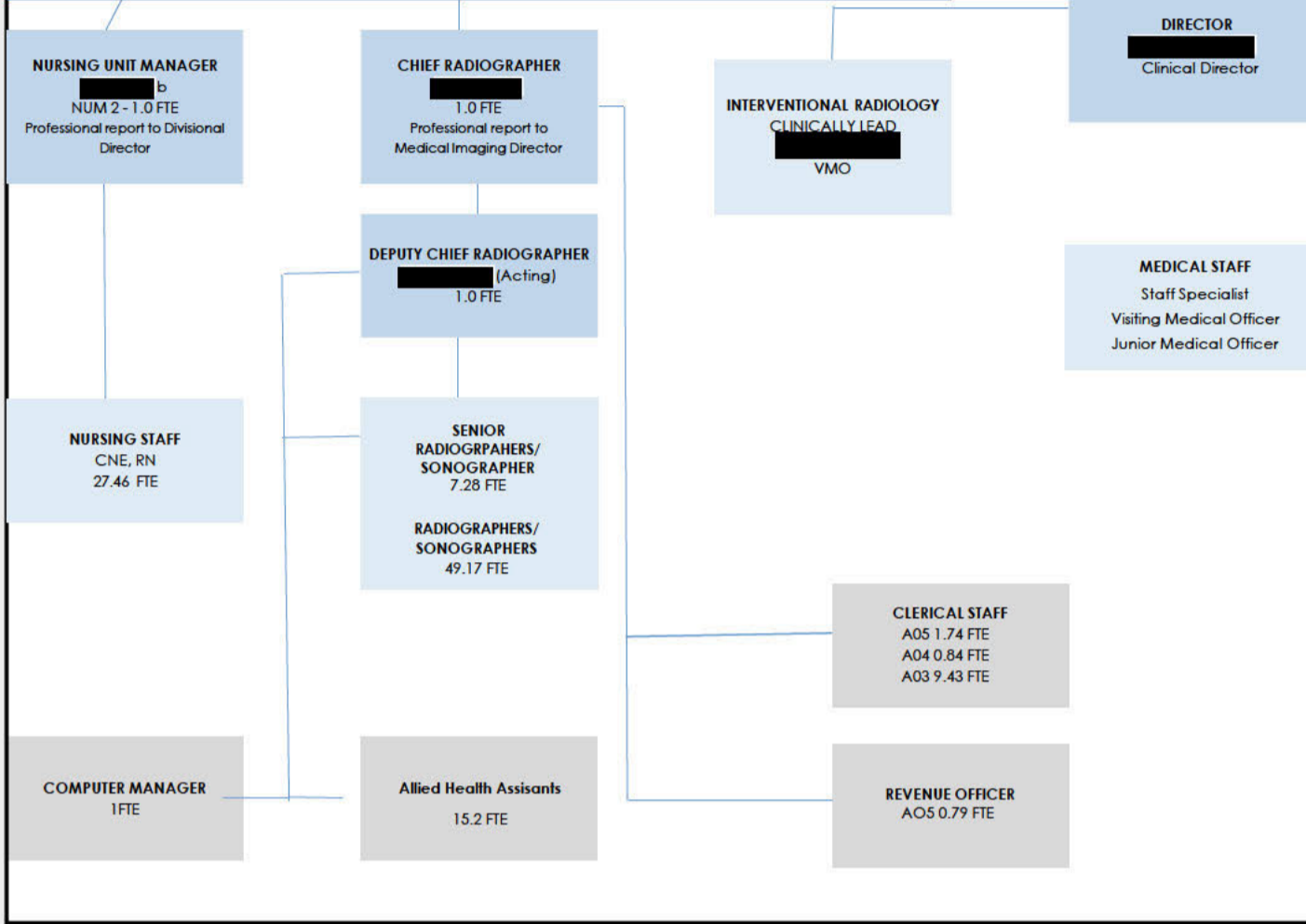
Local Team Structure's



DIVISIONAL DIRECTOR
 [REDACTED]
 NM 7 - 1.0 FTE

MEDICAL IMAGING (Diagnostic & Interventional Radiology)

MEDICAL IMAGING OPERATIONS MANAGER - HSM 4 1.0 FTE



LOCAL LEADERSHIP TEAM

CLINICAL

NON CLINICAL

SUPPORTED BY A NUMBER OF ORGANISATIONAL FUNCTIONS INCLUDING BUT NOT LIMITED TO; ALLIED HEALTH, PHARMACY, PALLIATIVE CARE, CLEANING, CORPORATE SERVICES, ETC.

Last updated 5 April 2023

Please note this is a live document, any proposed amendments to be sent to Hayley Smithwick via Hayley.Smithwick@health.nsw.gov.au

