



Finance

Procurement

April 2026

Better and
fairer care.
Always.

Background drivers for Change



The Finance Procurement function has operated under the Demand Manager (HSM4) model since the COVID-19 period, when the role was created to manage supply continuity and critical inventory flow for PPE and essential clinical supplies.



In 2025, SVHNS transitioned to HealthShare NSW (HSS) as the primary sourcing agent, requiring all procurement to align with NSW Health's procurement policy framework, introducing new compliance obligations and governance requirements.

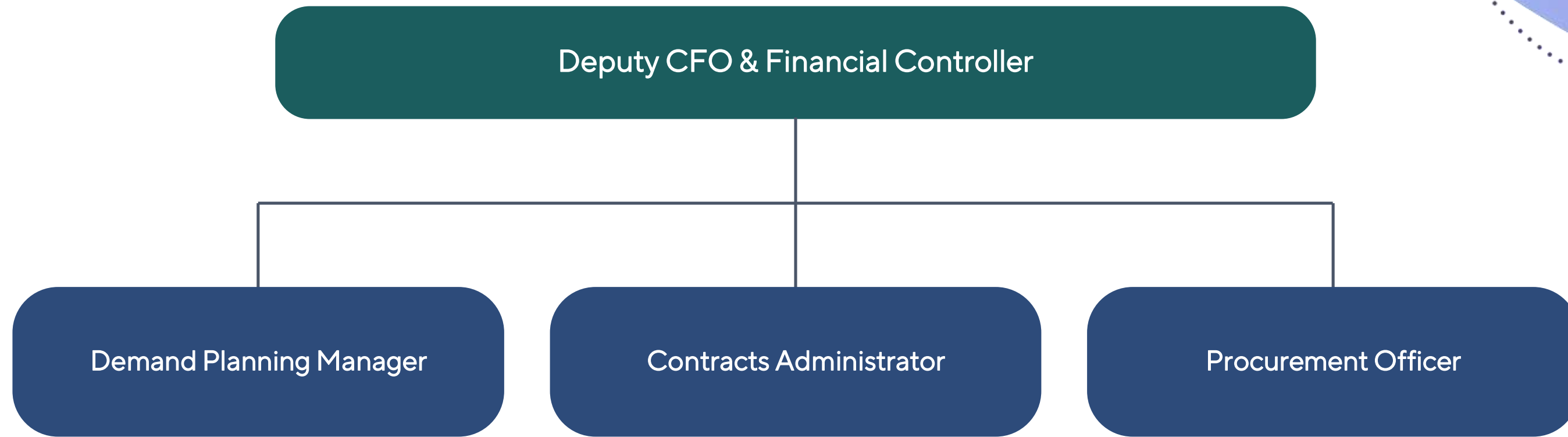


Growing organisational uncertainty regarding procurement rules, thresholds, exemptions and processes is contributing to increasing procurement risk and compliance exposure across SVHNS.

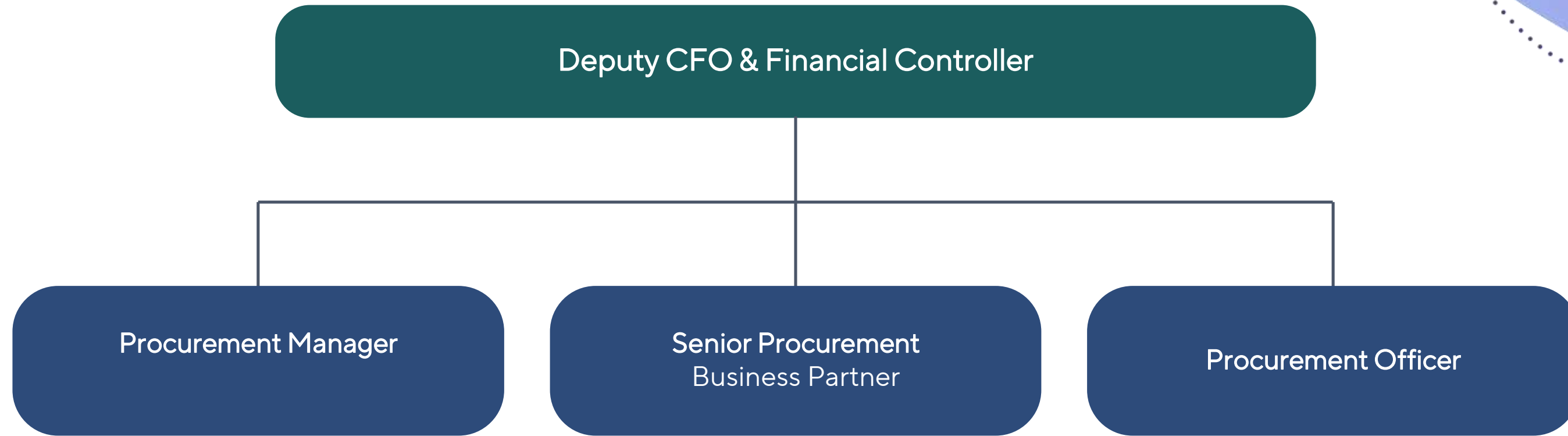


Opportunity to redesign the role as a strategic, organisation-wide leadership position focused on procurement governance, compliance oversight, analytics and value optimisation aligned to the post-COVID landscape.

Current Finance (Procurement) Organisational Structure



Proposed Finance (Procurement) Organisational Structure



Timeline of Proposed Changes

Steps	April 2026		
Staff Notified	1 April		
Consultation period	1 April	15 April	
Consultation closes		15 April	
Feedback to staff			w/c 20 April
Implementation			*27 April

Next Steps

- There will be a two-week consultation window to receive feedback on the changes. Feedback can be sent via email to the SVHS People & Culture team by 15 April 2026: svhs.peopleandculture@svha.org.au
- Any staff who have questions regarding the changes are encouraged to contact Michael Mikhail at Michael.Mikhail@svha.org.au or Christopher Hadjisavas at Christopher.Hadjisavas@svha.org.au
- Upon conclusion of the consultation period, feedback will be collated for review. Following consultation, an update will be provided during the week commencing 20 April 2026.

Counselling Support

There is the free and confidential counselling services offered through the EAP Service – AccessEAP 1800 81 87 28

The background features a dark purple field with large, overlapping, wavy shapes in shades of purple and blue. A series of dotted lines in a light purple color meanders across the composition, connecting the various shapes.

Questions